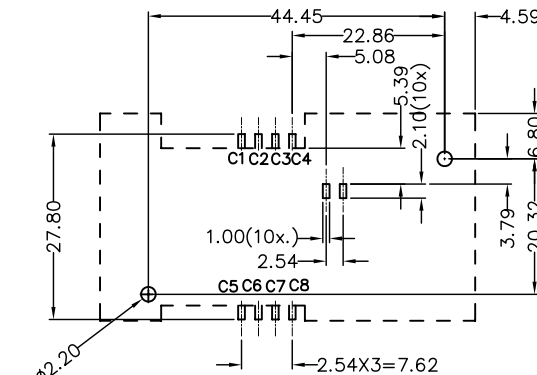
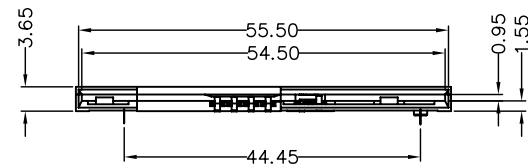
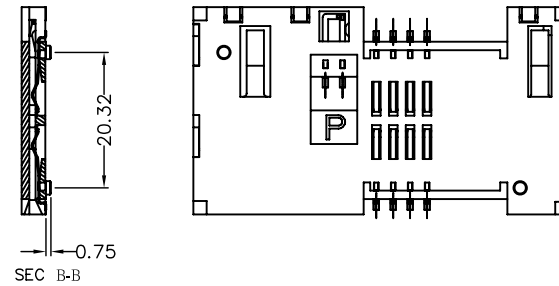
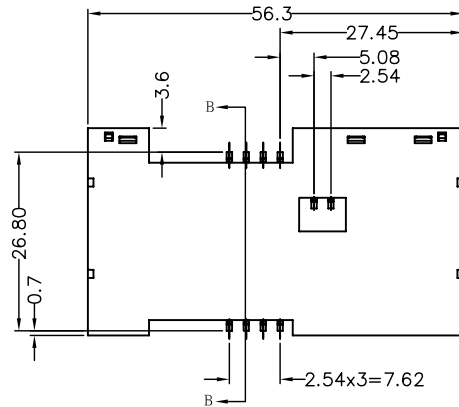


Specifications :

1. General Information
 - . Contact Principle: Friction Technology
 - . Mounting Type: SMT
 - . Switch: Blade Contact, Normal Open
 - . Durability: Insert And Withdraw Card For 100,000 Cycles At Maximum Rate Of 600 Cycles Per Hours
 - . Material:
 - . Terminal of Switch : Copper Alloy
 - . Detect Pin of Switch : Copper Alloy
 - . Data Contact : Copper Alloy
 - . Insulator: Thermoplastic, UL94V-0
 - . Rating Voltage: 30V AC
 - . Current Rating: 1A Max, 10uA Min
 - . Plating:
 - . Gold Plated On Contact Area
 - . Matte Tin Plated On Soldering Tail
 2. Electrical Specification
 - . Contact Resistance: 50m Ohms Max
 - . Insulator Resistance: 1000M Ohms Min
 - . Dielectrical Withstanding Voltage: 500V AC R.M.S. Min (Sea Level)
 3. Mechanical Specification
 - . Card Insertion Force: 15N Max
 - . Card Withdrawal Force: 1N Min
 - . Normal Contact Force : 0.3N~0.6N
 - . Contact Retention Force : 0.3kg Min.
 4. Environmental Specification
 - . Operating Temperature: -20°C~+70°C
 - . Operating Humidity: 20%~95% RH
 - . Solderability:
 - 1) Vapor Phase : 215°C, 30 Sec Max.
 - 2) IR Re-Flow : 260°C, 15 Sec Max.
 - 3) Manual Soldering : 360°C, 3 Sec Max.
- . RoHS Compliant



Reference P.C.B. Layout (Tolerance: ±0.10mm)

4UCON 元化興業股份有限公司
4UCON TECHNOLOGY INC.

DRAWING No.

10933

APPROVED BY

MEI

CHECKED BY

LHC

DRAWING BY

XSH 05/07-2007

UNLESS OTHERWISE SPECIFIED

TOLERANCES ARE

.X ±0.38

.XX ±0.25

ANG.

SCALE

NONE

REV.

A0

UNIT mm



NO. REV.

NEW RELEASE

REVISIONS

CHK

05/07-2007

DATE