

## Installing USB Drivers for the CP210x

6/20/2005

### 1 Overview

We've developed a few products based around the CP2101, CP2102 and CP2103 ICs by Silicon Laboratories. This document is intended to help with the installation of the drivers needed to get your OS working with this USB-to-UART device.

Drivers are currently available for Windows, Linux, Mac OS 9, and Mac OS X. Currently, this documentation only covers the basic Windows installation.

Windows and MacOS X drivers can be obtained from the SiLabs FTP server:

`ftp://ftp.silabs.com/Release`

user : cp210x - password : cp210xxfer

The drivers for Linux are in beta. You can download those from here:

`ftp://ftp.silabs.com`

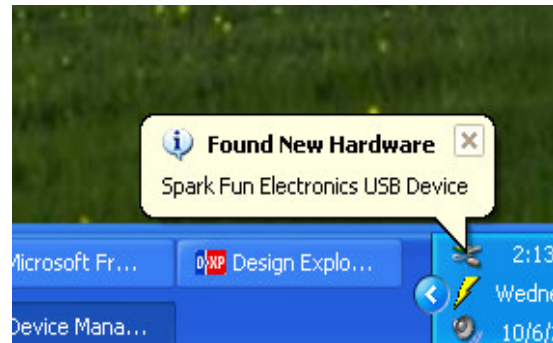
user : cp210x\_linux - password : linuxdriver

Please view the SFE support forum for the latest driver information:

`http://www.sparkfun.com/cgi-bin/phpbb/`

### 2 Installing Windows USB Drivers

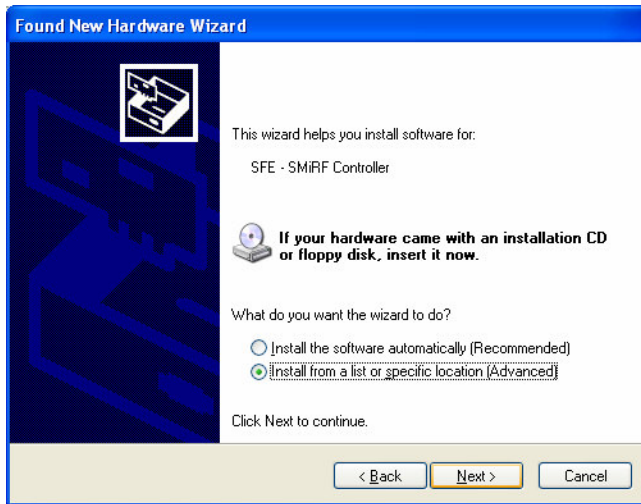
Download and unzip the Windows drivers into a known directory - you're going to need it later. Now attach the USB device to your system. The *Found New Hardware Wizard* should pop up:



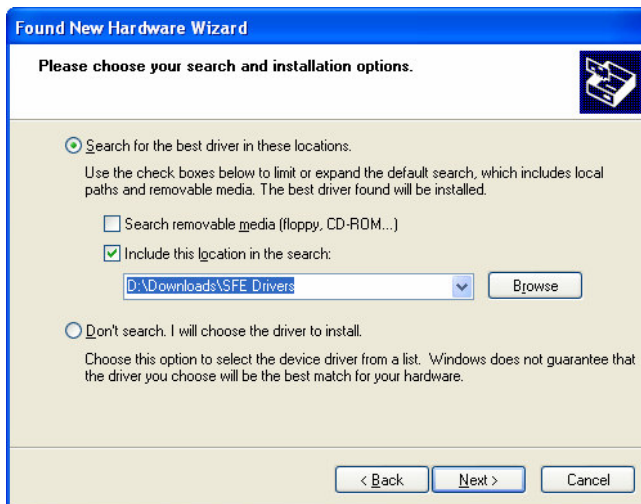
This is the new XP Service Pack 2 Wizard. Yours may look slightly different. Mainly, you want to tell your computer to look in a specific di-

# USB Driver Installation

rectory for the needed drivers. For XP, select *No, not this time* and click *Next*.



When asked to search automatically or from a specific location, Select *Install from a list or a specific location (Advanced)*.



Now you will need to tell the computer where the drivers are located. Navigate to the directory in which you unzipped the SFE USB Driver file.

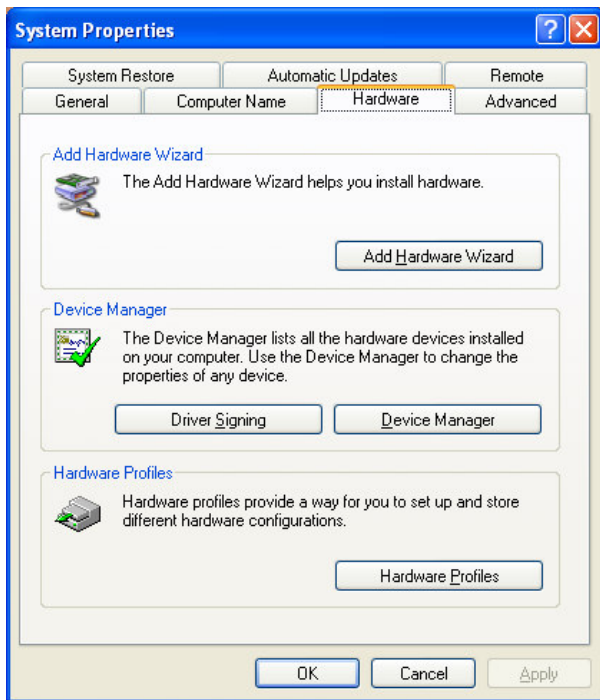
Windows may warn you that the driver is not verified. This is ok, click *Continue Anyway*.



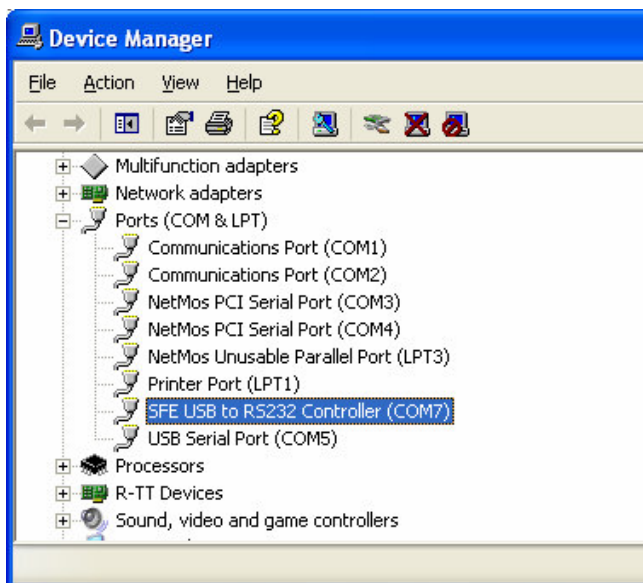
Installation complete!

To create a connection to the device, you will need to determine the com port onto which it installed. This is different in every case as the USB interface IC will attach itself to the first available Com Port. To find out where the **SFE USB to RS232 Controller** ended up, right click on 'My Computer' and click on *Properties*. This will open the *System Properties* window:

# USB Driver Installation



Next, click on the **Hardware** tab and then **Device Manager** button. This will open the Device Manager:



Scroll down to 'Ports' and open the branch. In this example, the **SFE USB to RS232 Controller** is located on Com Port 7. You can now use Windows HyperTerminal or your favorite terminal program to connected to this device via the com port number.