

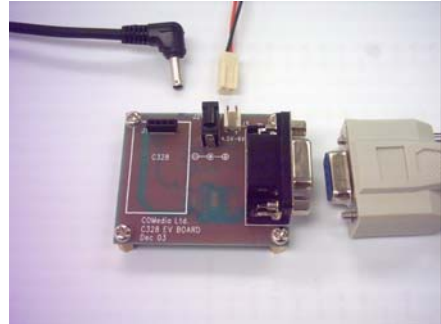
C328-EV232 EV BOARD

General Description

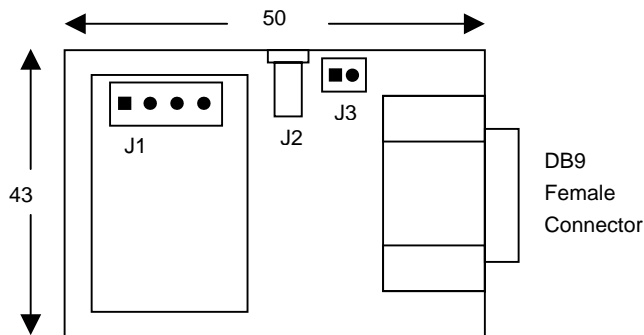
The C328-EV232 EV board is a simple application reference for the C328 Camera Module. It is built with RS232 transceivers to connect the C328 Module to a PC. A user-friendly PC driver is provided for user to evaluate the key functions of the C328 camera module.

Features

- DC adapter or Battery operate
- Direct connect to PC serial port
- PC driver provided
- OS Support: Win98/ME/XP
- Different image size setting
- Preview window
- Captured image window
- Light frequency setting



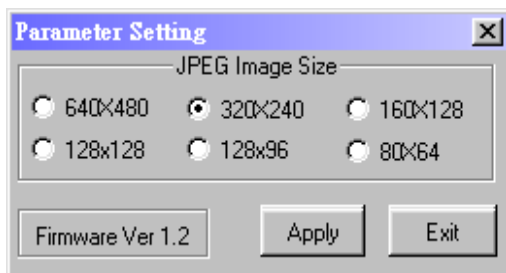
Board Layout



Connector Description

J1	4 pin header 2mm pitch for C328
J2	DC Power Jack, 5VDC input
J3	DC input, 3.6V or 4.5V
P1	9pin D type, female

PC Interface



Kit Package

Parts	Qty	Description
EV232	1pc	EV board
RS232 Cable	1pc	Serial Cable
2-wire cable	1pc	Power cable for battery
DC adapter	1pc	AC/DC adapter with 5V
CD ROM	1pc	Document and PC driver

Update: May 10, 2004