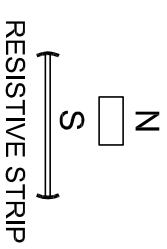
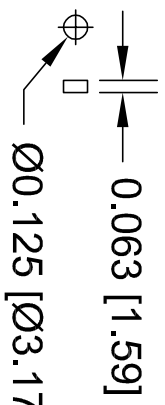
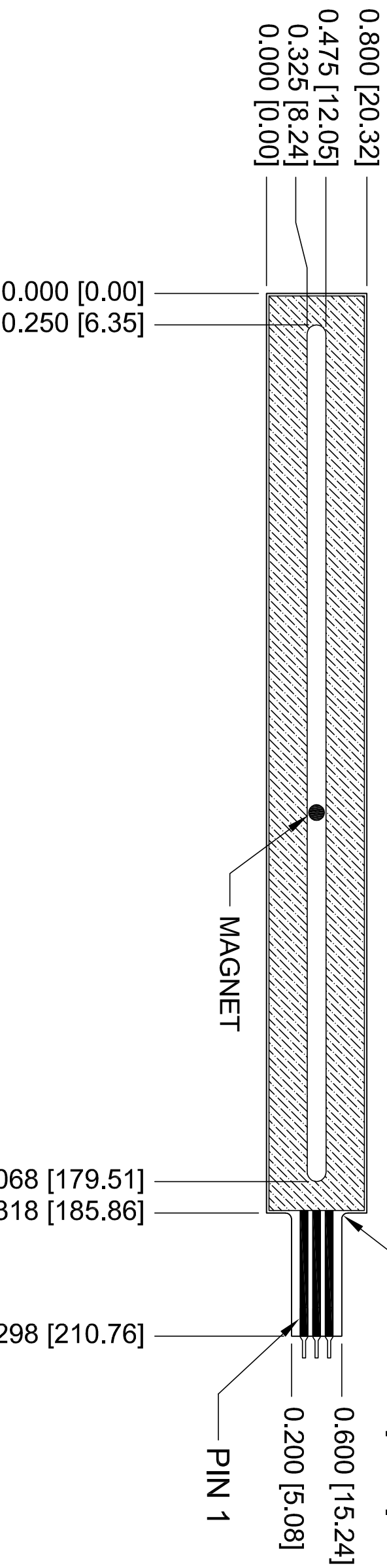


Magnets Grade N42sh

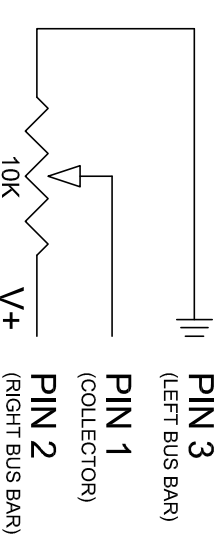
POLARITY



MAGNETIC TRACK



ELECTRICAL SCHEMATIC



RESISTANCE = 10K OHMS +/- 20 %
LINEARITY = 3%

MATERIAL BUILD UP

	0.002" 3M 467 ADHESIVE
	0.005" FR-4
	0.084" SPACER
	0.005" FR-4
	0.096" TOTAL
(3 EACH) 10241-12 CRIMP/FLEX SOLDER TABS	

ISSUE	A	RELEASE TO PRODUCTION	DATE	8/28/08	BY	BWM
REVISIONS						

TOLERANCE SPECIFIED
UNLESS OTHERWISE SPECIFIED
DIE MAKING +/- .005"
FINISH CUT GRAPHIC +/- .010"
FINISH CUT CIRCUIT +/- .015"
PRINT TO CUT REGS +/- .015"
PRINT TO PRINT REGS +/- .010"
LASER CUT PROTOS +/- .050"

Spectrasymbol SALT LAKE CITY, UTAH 84119
3101 W. 2100 S.
801-972-6995

CUSTOMER **SPECTRA SYMBOL**

P/N **MP1 MAGNETIC SENSOR**

TITLE **DOCUMENT 1**

DRWG NO. **7611-DOC1**

CAD FILE NAME **7611-MSTR**

DRAWING SCALE 1:1

QC CHK BY

DATE